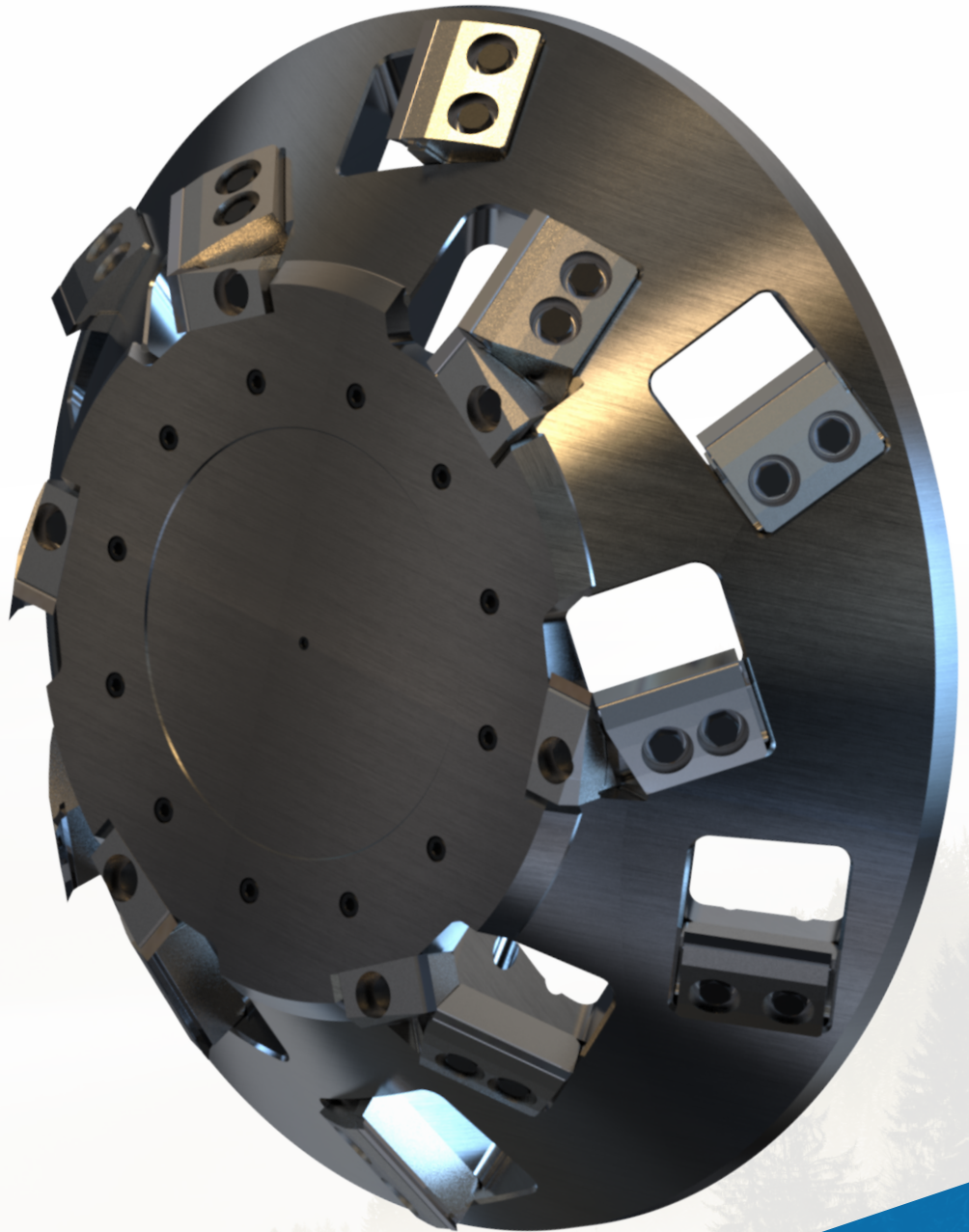


# CORTEX SOLID CONICAL HEAD



CORTEX

The Cortex Solid head is provides consistent log control and maintenance simplicity. No need for extra thick faceplates and bases to change out, simply setting the facing knives locks them in position. Not only are the heads offered at a very competitive price, these heads have the **LOWEST TOTAL COST OF OWNERSHIP** on the market. Knife and wear part cost provides significant savings compared to the competition.

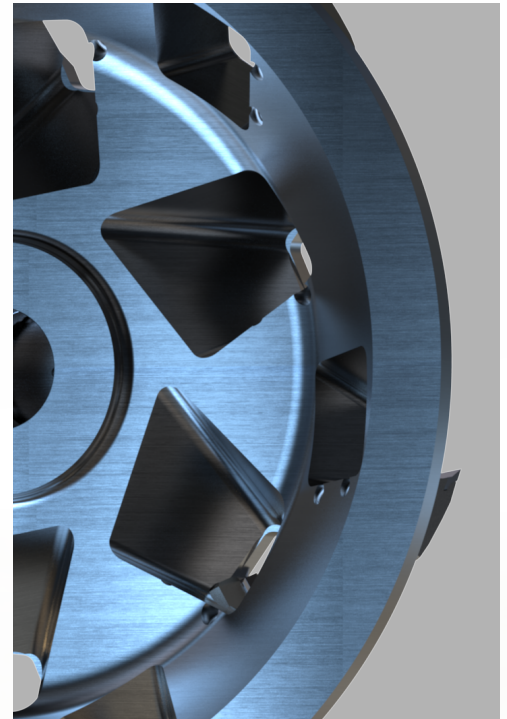
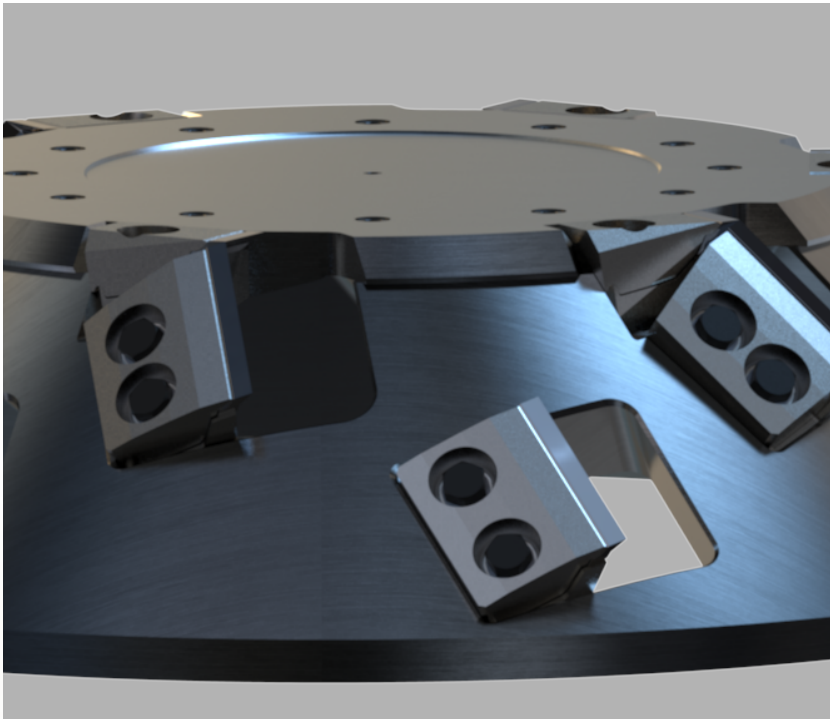


Tel: 503-781-8833  
[www.cortexna.com](http://www.cortexna.com)

# CORTEX SOLID CONICAL HEAD



CORTEX



## FEATURES & BENEFITS:

- › Superior Cortex knife – cold drawn, smooth surface finish, and cryo treated.
- › Optional Deep Depth of Cut Technology (shown in photo). Eliminate the double cut on slabbers for increased production.
- › Optional service contracts available.

Tel: 503-781-8833  
[www.cortexna.com](http://www.cortexna.com)